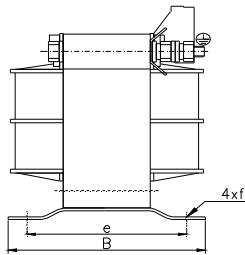
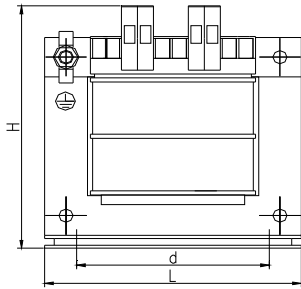


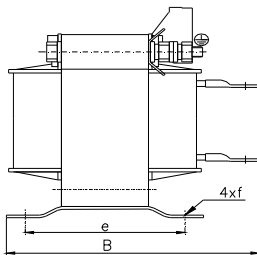


**Single-phase safety isolating transformers  
with the power range between 0,05 kVA and 2,5 kVA**

**ET1o**



Design with screw terminals



Design with cable lugs

**Technical data:**

Design	Safety isolating transformers are produced in accordance with requirements of EN/IEC 61558-2-6 standard
Insulation class	B(130°C) - standard up to 1,6 kVA, F(155°C) - standard above 1,6 kVA
Climatic class / environmental class	C1/E0 - land design C2/E1 - maritime and mining design
Ambient temperature	40°C - land design 45°C - maritime and mining design
Protection degree	IP 00
Protection class	I
Frequency	50/60 Hz
Primary voltage	up to 1000 V
Secondary voltage	up to 50 V
Terminals	Screw terminals with nominal cross section from 1,5 mm <sup>2</sup> up to 10 mm <sup>2</sup> or cable lugs
Fastening	by means of base plate or angles

Safety isolating transformers are assigned for supplying electric devices with safe voltage.

In standard design, the transformers are adjusted to fastening by means of a base welded into core or screwed angles.

If agreed, the transformers may have more tapplings. The windings terminals may be placed on one side only, or on both sides of a transformer.

Upon request, the transformers may be assembled in enclosures with the protection degree of IP 23, IP 44 and IP 54 with the possibility to insert supply cables through glands.

**Technical data of single-phase safety isolating transformers ET1o \*\***

Type	Power [kVA]	L [mm]	B [mm]	H [mm]	d [mm]	e [mm]	f [mm]	Weight [kg]
ET1o_* - 0,050	0,050	78	64	90	56	48	4,8 x 9	1,2
ET1o_* - 0,063	0,063	84	66	93	64	52	4,8 x 8	1,4
ET1o_* - 0,075	0,075	84	66	93	64	52	4,8 x 8	1,5
ET1o_* - 0,10	0,10	84	80	93	64	63	4,8 x 8	2,0
ET1o_* - 0,13	0,13	105	80	111	81	63	5,8 x 12	2,8
ET1o_* - 0,16	0,16	105	80	111	81	63	5,8 x 12	2,9
ET1o_* - 0,20	0,20	105	88	111	81	71	5,8 x 12	3,4
ET1o_* - 0,25	0,25	105	103	111	81	86	5,8 x 12	4,3
ET1o_* - 0,32	0,32	120	95	122	90	77	5,8 x 12	4,4
ET1o_* - 0,40	0,40	120	107	122	90	89	5,8 x 12	5,3
ET1o_* - 0,50	0,50	120	137	127	90	109	5,8 x 12	6,9
ET1o_* - 0,63	0,63	150	117	149	122	89	7 x 15	7,8
ET1o_* - 0,80	0,80	150	134	149	122	106	7 x 15	9,8
ET1o_* - 1,00	1,00	150	160	144	122	133	7 x 15	12,9
ET1o_* - 1,30	1,30	174	150	156	135	116	7 x 15	15,7
ET1o_* - 1,60	1,60	174	195	156	135	136	7 x 15	20
ET1o_* - 2,00	2,00	192	195	178	150	131	10 x 18	22
ET1o_* - 2,50	2,50	192	210	178	150	149	10 x 18	25,5

\*) - for transformer design with climatic/environmental class C2/E1 (maritime design W/3 or tropical design T/3) the letter "M" or "G" ought to be added depending on final application

\*\*) - this table was prepared basing on the technical specification for transformer with voltage ratio 230//24 operating under normal conditions. For other conditions and data the values may change

**Note:**

Manufacturer reserves the right to make changes resulting from the continuous development of products offered. If requested in advance, it is possible to manufacture transformer in other version.

Manufacturer: **ELHAND TRANSFORMATORY Sp. z o.o.**  
**PL 42-700 Lubliniec, ul. Klonowa 60**  
**tel.: (34) 34 73 100, fax: (34) 34 70 207**  
**<http://www.elhand.pl> e-mail: [info@elhand.pl](mailto:info@elhand.pl)**



ET/2014/X/03