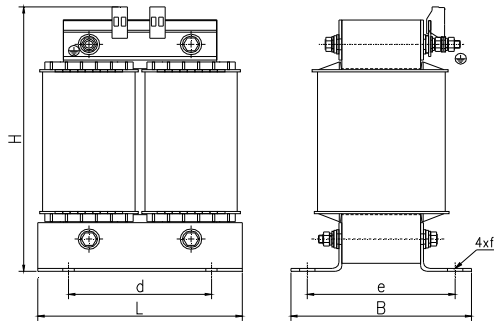




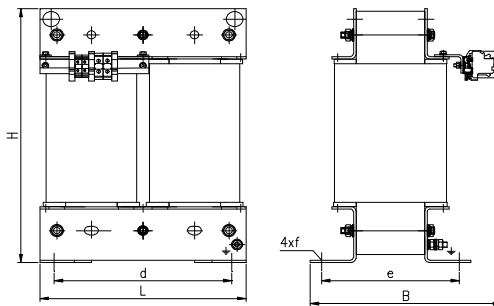
**Single-phase power transformers
with the power range between 2 kVA and 100 kVA**

ET1S

Technical data:



Design A



Design B

Design	Power transformers are produced in accordance with requirements of: EN/IEC 60076
Insulation class	B(130°C) - standard up to 5 kVA, F(155°C) - standard above 5 kVA
Climatic class /environmental class	C1/E0 - land design C2/E1 - maritime and mining design
Ambient temperature	40°C - land design 45°C - maritime and mining design
Protection degree	IP 00
Protection class	I
Frequency	50/60 Hz
Primary voltage	up to 1000 V
Secondary voltage	up to 1000 V
Terminals	screw terminal blocks or cable lugs or copper bus bars
Fastening	by means of angles

Power transformers are assigned for supplying electric devices, and for application in various industrial branches. In standard design, the transformers are adjusted to fastening by means of a base welded into core or screwed angles.

If agreed, the transformers may have more tappings. The windings terminals may be placed on one side only, or on both sides of a transformer.

Upon request, the transformers may be assembled in enclosures with the protection degree of IP 23, IP 44 and IP 54 with the possibility to insert supply cables through glands.

Technical data of single-phase power transformers ET1S **

Type	Power [kVA]	L [mm]	B [mm]	H [mm]	d [mm]	e [mm]	f [mm]	Weight [kg]	Design
ET1S * - 2,0	2,0	174	140	240	116	114	11 x 15	17	A
ET1S * - 2,5	2,5	174	152	240	116	126	11 x 15	21	A
ET1S * - 3,0	3,0	200	165	280	140	133	11 x 15	23	A
ET1S * - 3,5	3,5	200	177	280	140	145	11 x 15	27	A
ET1S * - 4,0	4,0	200	192	280	140	160	11 x 15	30	A
ET1S * - 5,0	5,0	240	165	335	200	127	11 x 15	35	A
ET1S * - 6,3	6,3	240	180	335	200	142	11 x 15	40	A
ET1S * - 7,5	7,5	280	200	375	240	151	11 x 15	46	A
ET1S * - 8,0	8,0	280	200	375	240	151	11 x 15	48	A
ET1S * - 10,0	10	280	210	380	240	168	11 x 15	56	A
ET1S * - 12,0	12	280	220	380	240	178	11 x 15	63	A
ET1S * - 15,0	15	320	300	425	270	190	13 x 18	74	B
ET1S * - 16,0	16	320	300	425	270	190	13 x 18	76	B
ET1S * - 20,0	20	360	330	480	310	220	13 x 18	98	B
ET1S * - 25,0	25	360	340	480	310	240	13 x 18	120	B
ET1S * - 30,0	30	360	350	480	310	240	13 x 18	130	B
ET1S * - 40,0	40	360	400	480	310	270	13 x 18	160	B
ET1S * - 50,0	50	460	420	550	360	220	13 x 18	190	B
ET1S * - 63,0	63	460	450	550	360	240	13 x 18	218	B
ET1S * - 75,0	75	460	480	550	360	270	13 x 18	254	B
ET1S * - 80,0	80	480	430	640	380	260	17 x 25	268	B
ET1S * - 100	100	480	460	640	380	290	17 x 25	334	B

*) - for transformer design with climatic/environmental class C2/E2 (maritime design W/3 or tropical design T/3) the letter "M" or "G" ought to be added depending on final application

**) - this table was prepared basing on the technical specification for transformer with voltage ratio 400//400 operating under normal conditions. For other conditions and data the values may change

Note:

Manufacturer reserves the right to make changes resulting from the continuous development of products offered.

If requested in advance, it is possible to manufacture transformer in other version.



Manufacturer: **ELHAND TRANSFORMATORY Sp. z o.o.**

PL 42-700 Lubliniec, ul. Klonowa 60

tel.: (34) 34 73 100, fax: (34) 34 70 207

<http://www.elhand.pl> e-mail: info@elhand.pl

ET/2021/II/14